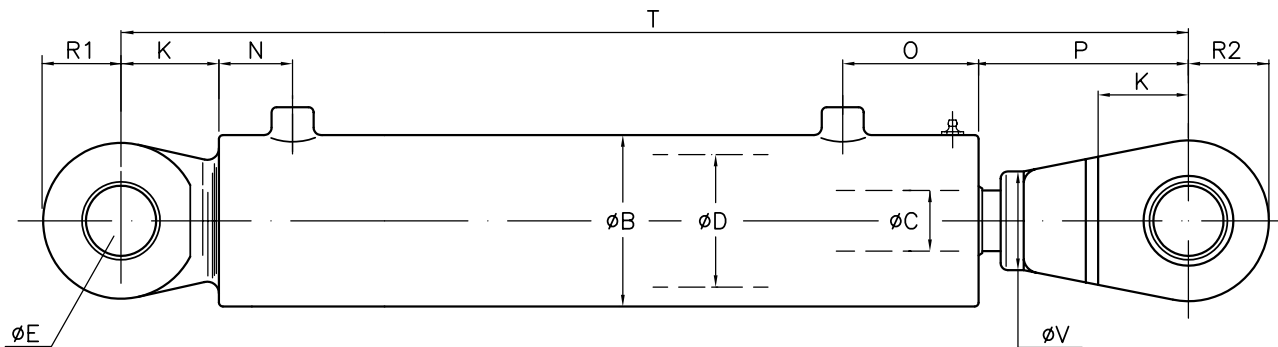


PULLING CYLINDERS ABOVE 300 BORE

Design pressure: 250 bar



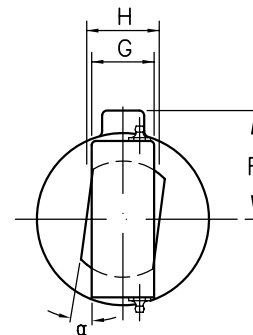
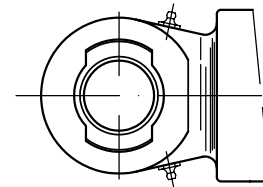
STANDARD DESIGN

- type of port (flange/ threaded), grease nipples to customers requirements
- special equipment as fork ends, trunnion, cushioning, etc. available on request
- any special requirements, please ask for dimensional drawings.

materials:

- cylinder tube: St.52.3 N
- piston rod: St.52.3 N or X20CrNi17 1.4057 plated with 80my Cr
- spherical bearing: composite or bronze

- long pulling cylinders working in horizontal position have to be calculated for static bending due to weight and possible dynamic forces. This might give increased c/c length and larger rod diameter.



CYL. TYPE	D	C	B	E	F	G	H	K	N	O	P	R1	R2	T	V	α_{max}	Traction force 250 bar
Pulling Cylinder	320	140	394	160	242	140	150	200	105	235	455	170	180	1155	230	3.2°	1625 kN
Pulling Cylinder	350	160	419	180	255	150	160	210	115	285	480	180	200	1250	260	5.1°	1900 kN
Pulling Cylinder	400	180	470	200	280	160	180	240	130	285	550	225	225	1420	290	4.6°	2505 kN
Pulling Cylinder	460	220	546	220	318	180	200	275	145	300	620	260	260	1580	320	4.4°	3204 kN
Pulling Cylinder	520	250	610	240	350	200	220	310	160	300	330	280	280	1700	350		4080 kN

Other dimensions available on request

BAUER hydraulics

We reserve the right to change specifications without notice.

BRØDR. BAUER-NILSEN A.S., BOX 100, N-5501 HAUGESUND, NORWAY. TLF.: +47 52 70 77 70 FAX: +47 52 70 77 99